

## Flexion Wrist

The flexion wrist allows an amputee to preposition the terminal device in 30 or 50 degrees of flexion. This becomes important when performing activities at the body's midline, such as eating and shaving. Most unilateral amputees (missing part of one upper limb) do not require this; however, it is critical for bilateral amputees (missing part of both upper limbs).

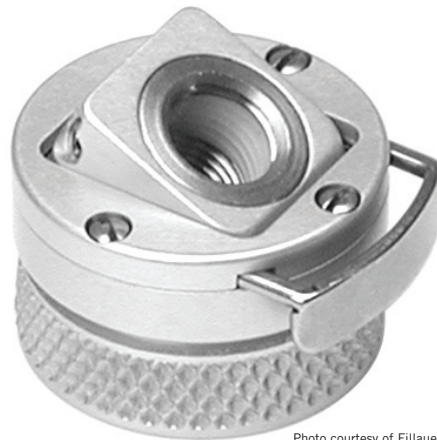


Photo courtesy of Fillauer Companies



*Modern Technology. Traditional Values. Proven Techniques.*