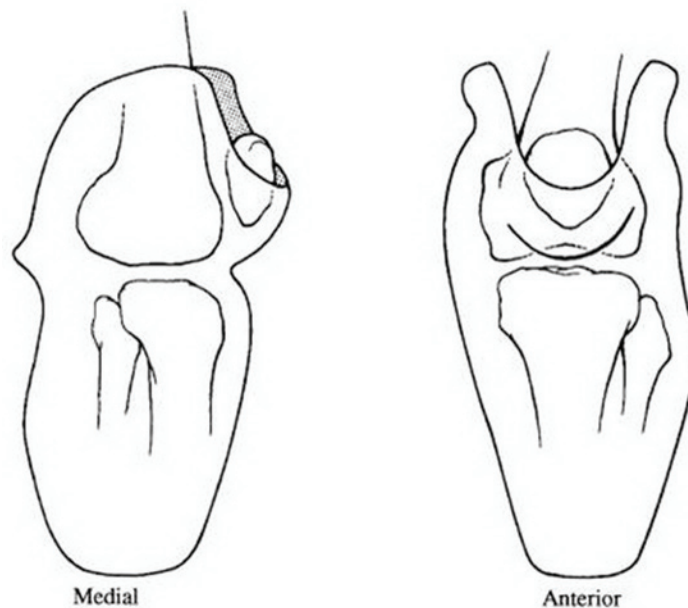


Supracondylar Suspension

The supracondylar socket design is a suspension option for transtibial (below knee) amputees. A dense foam insert is worn inside the prosthetic socket. This insert is fabricated with a wedge that creates purchase over the medial femoral condyles (wide bony parts of the knee) to suspend the prosthesis on the patient's body. This combination provides mediolateral (side-to-side) stability and is indicated for patients with shorter residual limbs or weak musculature.



Images reprinted with permission from Bowker JK, Michael JW (eds): Atlas of Limb Prosthetics Surgical, Prosthetic, and Rehabilitation Principles, 2nd edition. Rosemont, IL, American Academy of Orthopaedic Surgeons, 2001.



Modern Technology. Traditional Values. Proven Techniques.